



Najad 405

Mid range cruising style.

Inheriting the same Najad family genes from more recent new launches, the new Najad 405 is a natural development of the out-going N400. The rig is taller, in line with the overall enhanced performance and sportier characteristics now set in space across all of Najad 's newest model range. The balanced spade rudder will have no skeq and offer a light feeling to the helm, making for easier tacking and less stressful close quarter maneuvers.

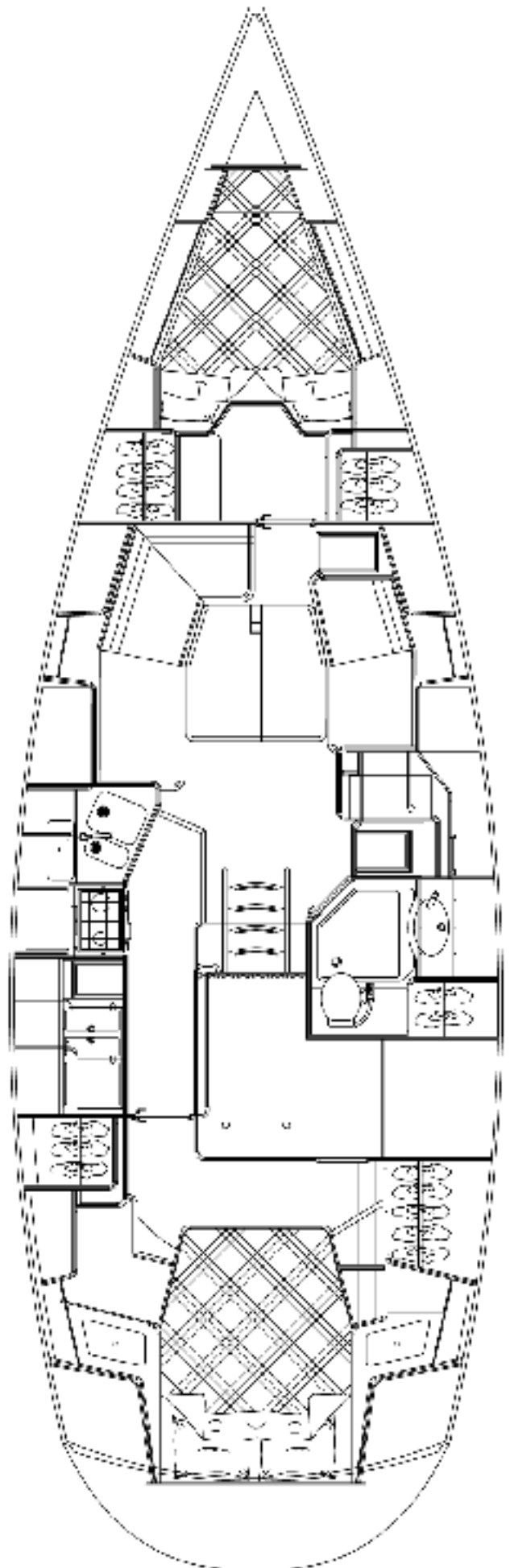
För medellånga kryssningar.

Nya Najad 405 har ärvt samma Najad-gener som de senaste lanseringarna, och är en naturlig utveckling av den utgående N400. Riggen är högre, i linje med den allmänt höjda prestanda och de sportigare egenskaper som nu tagit plats i hela Najads nyaste modellsortiment. Det balanserade spadrodret har inget skeg och ger en lätt känsla till rodret, så att det blir lättare att stagvända och mindre påfrestande vid snäv manövrering.

Gut geeignet für Langstreckentörns.

Die neue Najad 405 hat sozusagen die gleichen Najaderbanlagen wie die zuletzt auf den Markt gebrachten Modelle, und ist eine natürliche Weiterentwicklung der Najad 400: Mit einem höheren Rigg und insgesamt besseren und sportlicheren Segeleigenschaften, was ab jetzt alle Najad Modelle auszeichnet.

Das ausbalancierte Spatenruder hängt frei am Rumpf und macht die Najad 405 dadurch wendiger in der Bewegung.



N 405

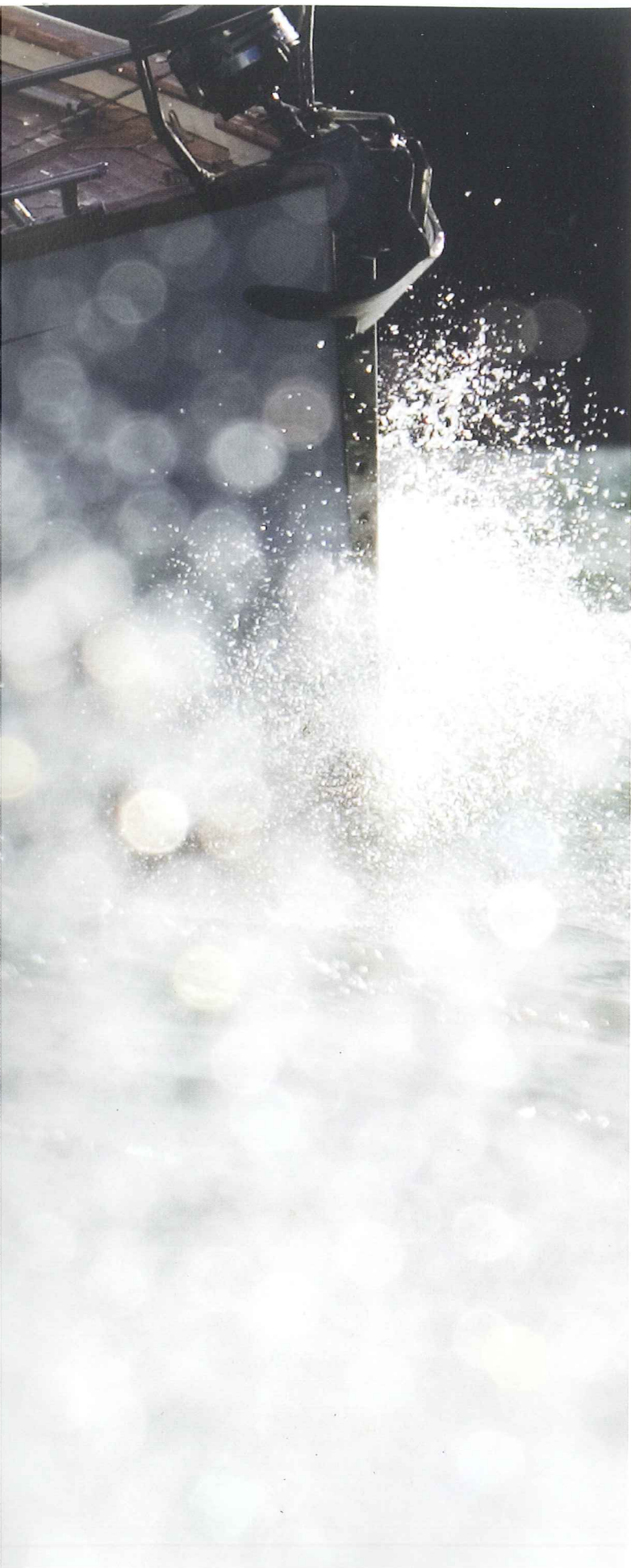












"The challenge was to enhance performance without sacrificing traditional Najad values."

Torsten Conradi, judel/vrolijk & co

The swiftest Najad ever. Building a fast sailing yacht is naturally a major challenge. But combining first-class sailing properties with genuine comfort and generous accommodation is even more challenging.

Like most recent Najad models, the Najad 405 was developed in cooperation with one of the world's most highly renowned sailboat designers: judel/vrolijk & co. Their long experience of racing yachts, including America's Cup winners, has resulted in a very modern hull shape that enables the Najad 405 to be one of the most performance-oriented Najad model to date. The hull is dimensioned with immense precision, featuring a somewhat slimmer entry and sharper stern than

its siblings in the Najad range. The Najad 405 is also equipped with a balanced spade-rudder, with no skeg. It gives you a particularly distinct and light rudder feel that makes the vessel easy to steer, tack and manoeuvre. An all-new, narrower but deeper keel, with a short fore and aft chord length with a delta-shaped bulb and a low centre of gravity enables great lift, quick tacking and extremely good stability. Rigged with a deck stepped mast and three spreaders are further examples of how we combine performance with safe, comfortable sailing. Although the Najad 405 has plenty of space on board for all the family, it has also been designed so you can sail it short-handedly.

"Through the careful use of sight lines, symmetry and furniture detailing we have aimed to create a feeling of space, calm and elegance."

Dick Young, Dick Young designs

Space for the good life. Together with Dick Young designs we have created a modern, timeless elegance that draws its inspiration from exclusive one-off yachts. The goal of our cooperation has been to build on the heritage and quality of Najad yachts, whilst evolving the Najad range to meet the changing life style requirements of our customers. The result is a calm and harmonious environment with plenty of light and air, smooth surfaces, a balanced combination of various high-grade wood species and a wealth of tasteful details. Form is not just for the eye to feast on – the Najad 405 has been designed so you

and your family will enjoy yourselves on board without giving up the comforts that give life that gilt edge. This means among other things that you're welcomed by a spacious saloon and galley. That you'll find an equally spacious and luxurious aft-cabin. That all electronic equipment is neatly integrated into the interior trim. That you can specify a washing machine, TV and DVD. And that we have utilised every single opportunity for practical storage. Ventilated pocket-spring mattresses, self-shutting drawers in the galley and spotlights integrated into the ceiling are other examples of functional comfort offered by the Najad 405.

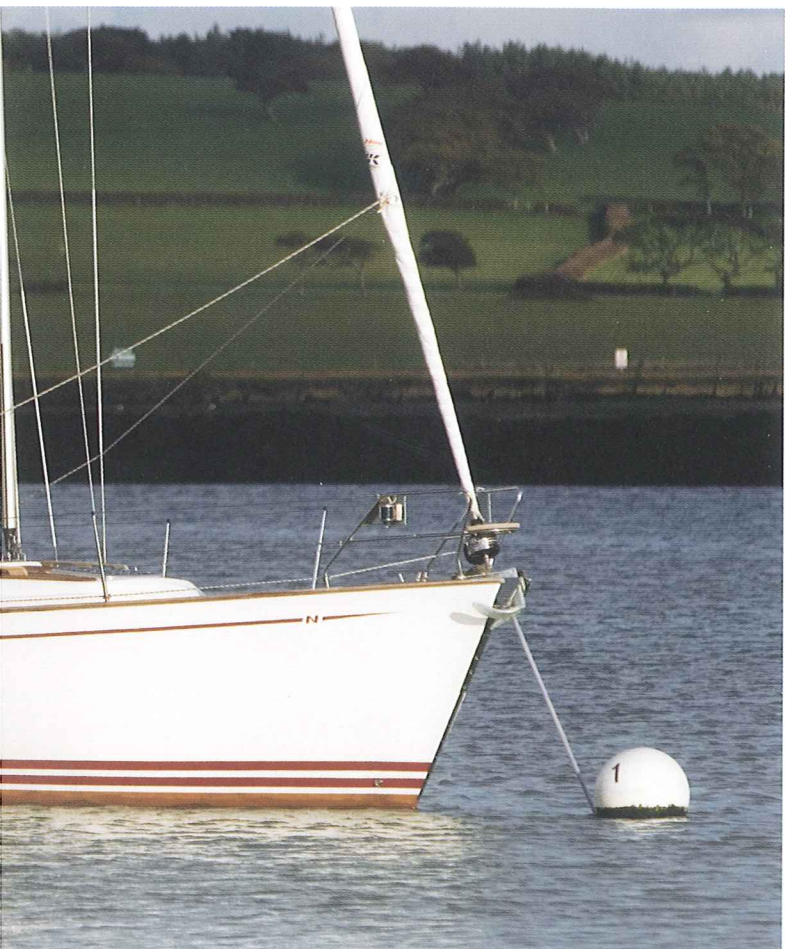








The Najad Way of Life



















"It's all about investing one's soul in the details, about being satisfied only when the finish is perfect."

Letting feelings decide. Najad yachts are never going to be made in large numbers. And that's exactly the way we want things. Because even if we naturally utilise modern aids so we can constantly improve, it is nonetheless always the feeling, the craftsmanship and the tradition that form the very basis of all we do.

Boats have been built for thousands of years on the northern coast of the island of Orust in Sweden's western archipelago. It's a heritage that is very much alive to this very day at Najad. The professional pride of our designers and boatbuilders is a strong and vital driving force. It leaves nothing to chance and accepts nothing less than a first-class result. You'll notice it in the choice of materials and equipment,

the finish of the details and the experience of sailing a thoroughly well-built boat. Since we started operations in 1971, the market for cruisers has undergone an amazing development. Demands for comfort and sailing characteristics are far higher today than ever before. At the same time, the competition has become far tougher. Despite this, Najad is stronger today than ever before. This may be because we have always taken care to listen to our most discerning customers. Or because we were quick to open the door to modern engineering and design. Or quite simply because we have been skilled at nurturing and building on the values in which we believe. Performance and seaworthiness. Comfort and security. Function and genuine quality.

t being satisfied

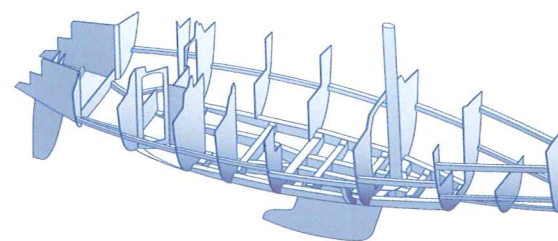
f the details and the experience of sailing a thoroughly
oat. Since we started operations in 1971, the market for
undergone an amazing development. Demands for com-
ing characteristics are far higher today than ever before.
e time, the competition has become far tougher. Despite
is stronger today than ever before. This may be because
ays taken care to listen to our most discerning customers.
we were quick to open the door to modern engineering
Or quite simply because we have been skilled at nurturing
g on the values in which we believe. Performance and sea-
Comfort and security. Function and genuine quality.







Hull



The strong, well-dimensioned hull is designed to offer first-class sailing properties without encroaching on interior space, comfort or safety.

The hull is built from the outside inwards in three main layers in a sandwich construction. First we lay an outer layer of glass fibre, then a thicker intermediate layer of Divinycell (with vacuum) and finally another layer of glass fibre. Divinycell is a resilient, high-density PVC foam with sealed cells that do not absorb water. Density (hardness) is increased and the material is reinforced at points in the hull where equipment is to be fitted.

Longitudinal and transverse torsional strength

The next stage is to laminate the hull halves together into a complete unit and lift this out of the mould. The joining and lamination of the hull are done so that the central part of the hull becomes its strongest point. A base grid is integrated into the centre of the hull. A strong, complex construction which runs from the upper edge of the keel, up to the sole and lengthways and crossways throughout the entire boat. This provides torsional strength and builds a foundation for the furniture and engine mountings. The deck and superstructure are built on the same principles as the hull. From the outside inwards, using separate moulds. Before the deck is laid on the hull the fixtures for the interior of the superstructure and bulkheads are fitted. The deck and hull is bolted and glued to create an especially strong and watertight bond at the toerail and further reinforced with lifeline stanchion

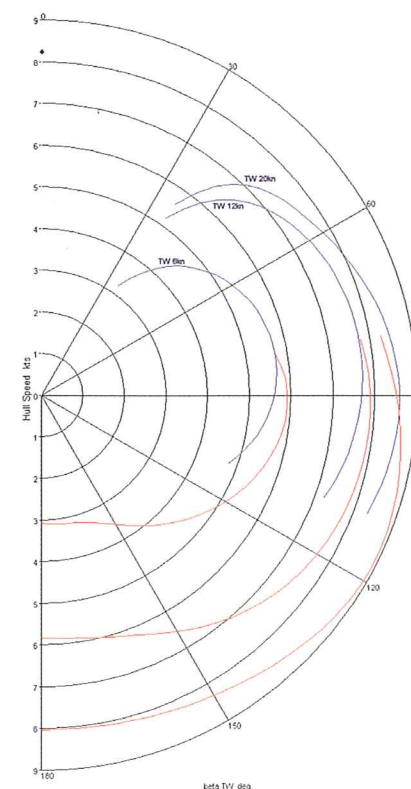


The keel has a short body and sports a narrower shape and a delta-formed heavy ballast bulb for a deep centre of gravity and excellent stability. Standard depth is 2.1 metres. Option: 1.9 metres.



Balanced spade-rudder, designed for comfortable cruising and easy manoeuvring.

supports which are bolted through the toerail joint. All bulkheads are laminated from both sides. Finally the inside of the boat is given a topcoat and the hull is now ready for the interior fitout and systems.

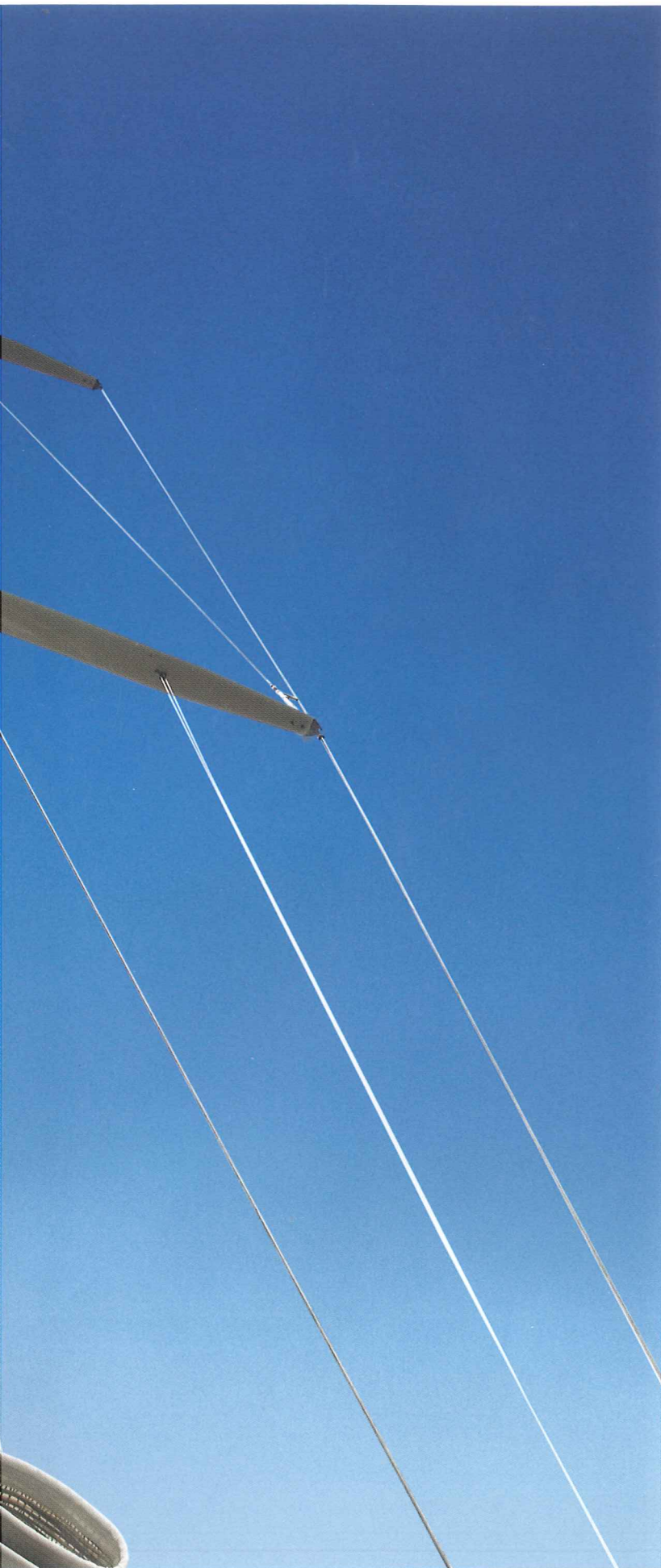


Certified by Germanischer Lloyd

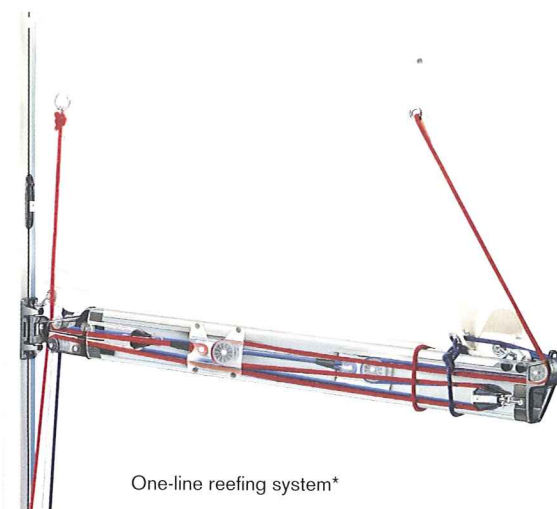
Each new Najad model is designed and built according to G. Lloyd "GL 100 A5" regulations. These cover the hull, deck and superstructure, main bulkheads, engine bed, chain-plate fastenings, stem fittings, engine installation, plumbing installation and electrical and electronics installations. Najad yachts are classified according to the CE norm "Boat Category A-Ocean". You can also specify a type certificate for your particular yacht.

Germanischer Lloyd is an independent international organisation for safety and quality control. The organisation offers technical expertise to industry the world over. G. Lloyd's activities comprise control and certification of safety and quality in ships, boatyards, offshore rigs and other industrial plant.

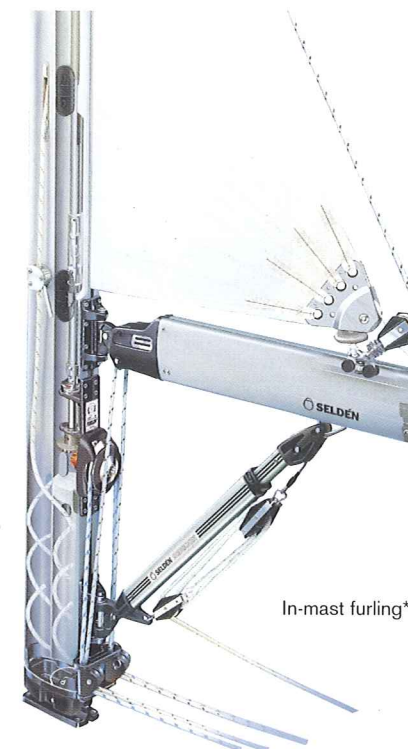




Rigging



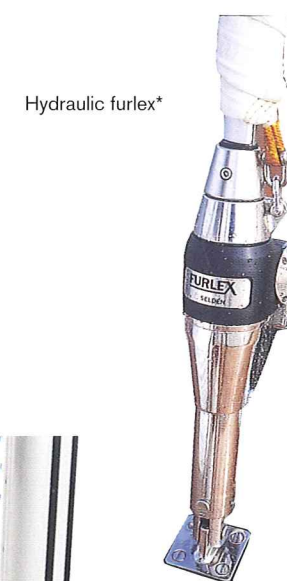
One-line reefing system*



In-mast furling*

The Najad 405 is equipped with rigging from Seldén – one of the world's leading manufacturers of spar and rigging systems for yachts displacing from 2 to 30 tonnes. An aluminium mast with three spreaders and furlex are standard. In-mast furling with or without an electric motor is available as an option.

There is also the option of a carbon fibre mast.



Hydraulic furlex*



Furlex



Electric In-mast Furlin*

* Options

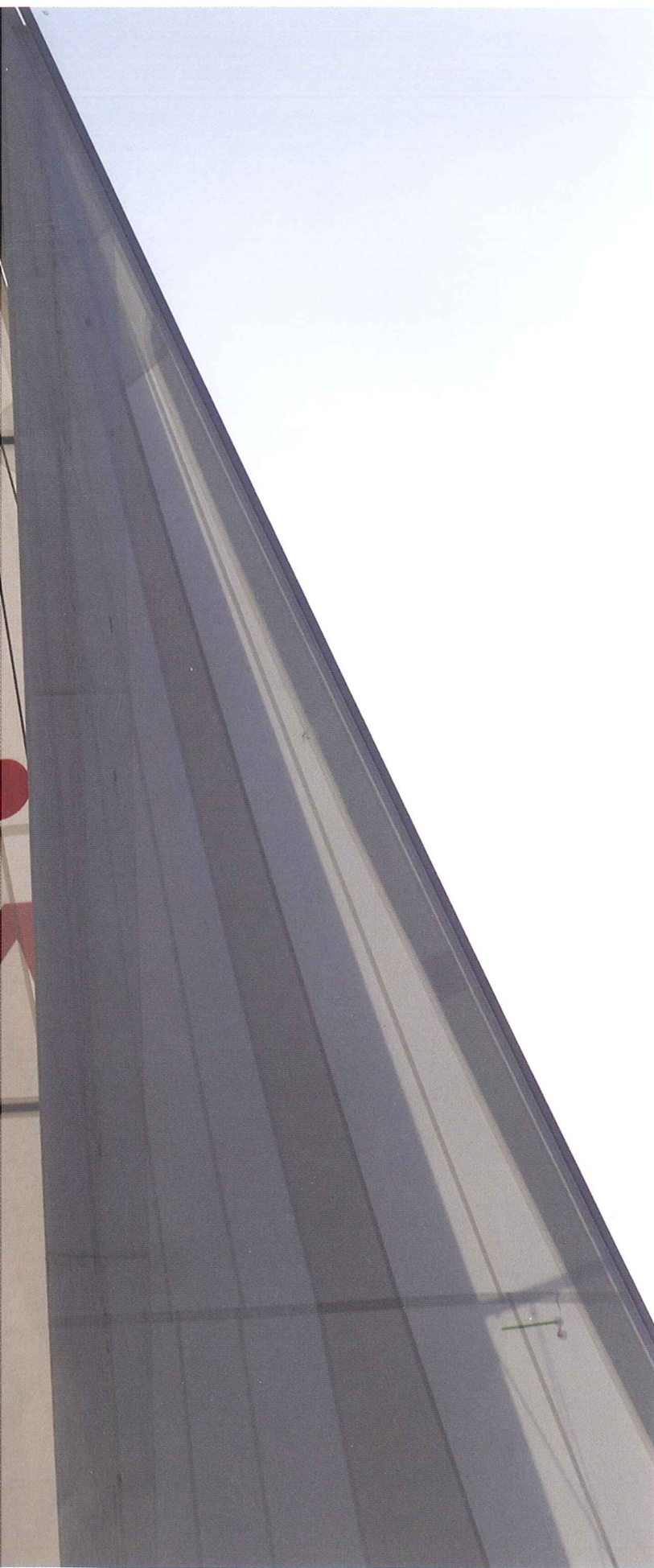


V-spreaders*



Carbon fibre is a lightweight and strong alternative. For modern yachts, carbon fibre is increasingly ordered as an alternative to aluminium. The strength and low weight of carbon fibre contribute to the excellent sailing properties. Carbon fibre spars are around 50 % lighter than traditional aluminium masts. The result is increased speed, and the lighter mast also gives the boat a lower centre of gravity, thus reducing heeling and pitching and generating a smoother, more enjoyable ride. The advantageous stiffness to weight ratio also means that the mast can be engineered for less reliance on runners and babystays, for example. Najad's carbon fibre masts are supplied by Nordic Mast.





Sails

The sails for the Najad 405 are made by UK-Halsey Sailmakers. The Najad 405 is delivered with Pentex sail cloth as standard. You can also choose Spectra sails with or without Tape-Drive ® or UK Ultra. All the cloths are mildew treated and have UV cloth in leech and foot as standard. UK-Halsey Sailmakers is part of a worldwide network of over 35 UK Sail lofts.



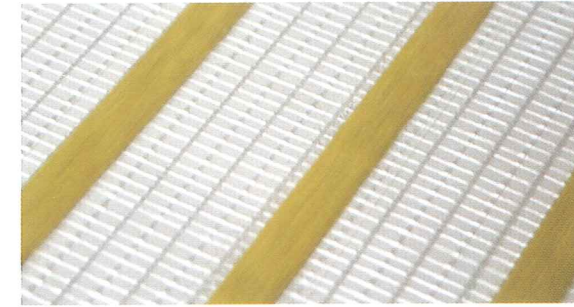
DCP – Pentex

These laminates offer lower stretch than polyester, yet the material is durable and easy to handle in high-tech (furling) sails. Pentex is produced by laminating two layers of polyester taffeta on both sides of a film-encapsulated PEN scrim. The construction has proven excellent warp-stretch performance and great tear strength.



DYS – Spectra *

Spectra/Dyneema sandwich laminates exhibit easy handling and excellent durability. The base is encapsulated by film on which a ripstop taffeta is laminated. Newly developed finishing techniques minimize the chance of mildew growth.



Tape-Drive – Stronger, lighter, faster *

The secret of Tape-Drive's strength is the web of low-stretch tapes that run along the sail's primary load paths from corner to corner. Because the major stresses in a sail are borne by tapes, the base sail cloth only needs to be a lightweight laminated skin fabric. Tape-Drive sails are light enough to lift and fill to get the boat going in light breezes, while being strong enough to hold their shape in a blow.



UK Ultra *

UK Ultra is a result of improving Tape-Drive. UK Sailmakers design and engineer the laminate and the sail at the same time and then build the two in unison. With this method, the load-bearing materials follow the sail's load map. The materials reflect exactly what the designer called for. Secondary and tertiary loads are handled by the addition of a tri-axial aramid scrim.

* Options





Exterior

* Options



White hull with blue decorative line*



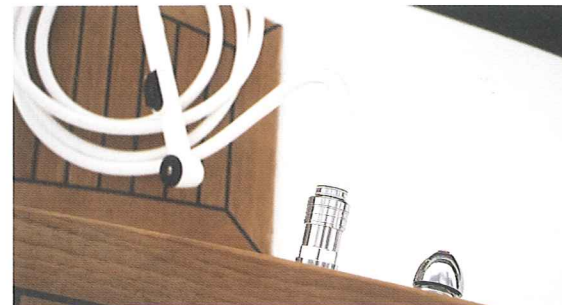
Built-in davits*



Stainless steel protection*



Underdeck windlass



Shower on swimming platform*



Sprayhood extension*



Opening in lifelines*



Teak on coach roof*



High-gloss varnished entry*





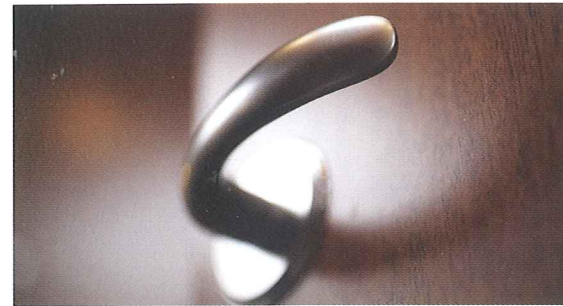
Interior

The interior is of extremely high quality throughout, with mahogany and jatoba as the main types of wood. A selection of high quality fabrics are included in the standard specification. There are additional alternative upholsteries including leather.

In other respects too the Najad 405 offers virtually unlimited scope for creating an interior that meets your personal needs. Here are a few examples.



A selection of high quality fabrics.



Handles and locks in high-gloss stainless steel or with a brushed matt surface



Counter tops and sinks made of Corian®*



Jatoba and Wengé – contrasting wood



Auto-shut drawers



Designer faucets in stainless steel



Integrated blinds*

* Options





Navigation

You can choose navigation equipment to suit your particular needs. The examples below come from Raymarine, a renowned supplier working with Najad for many years.



Raymarine ST60 – a versatile series of navigation instruments for simple and clear display of the most important functions on board. If you want larger instruments, more functions and faster data transfer, you can instead choose the ST290.



ST290



Autopilot: ST6001 Shows data from up to 7 SeaTalk pages on a high-quality LCD screen.



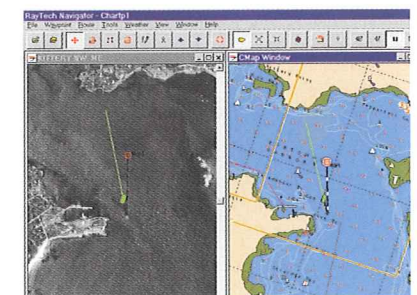
VHF 240E VHF: VHF with DSC (Digital Selective Calling).



Radar antenna: 18 or 24 inch radom antenna with output of 2 and 4 kW respectively.

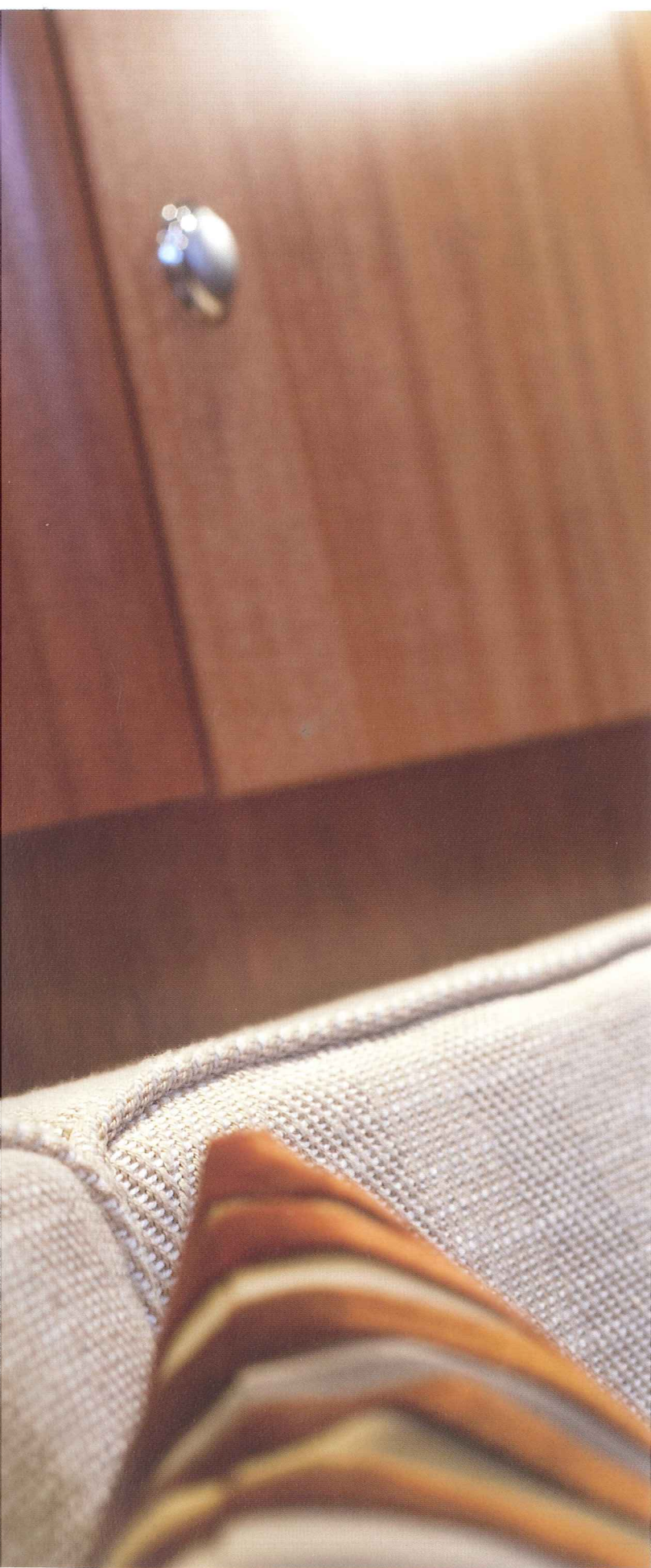


Multifunctional colour screen for radar functions, map plotter and fishing sonar: C80 with 8.4 inch TFT LCD or C120 with 12.1 inch TFT LCD. There is also the option of the E80 or E120.



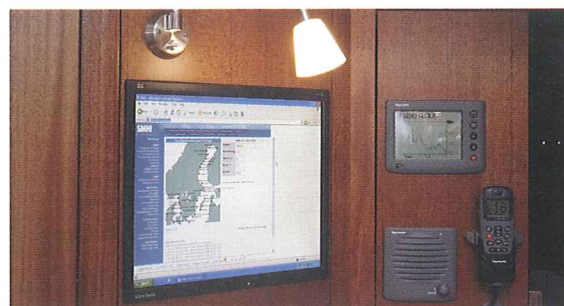
Ray Tech RNS V5.0: Comprehensive software for navigation system. RNS map plotter, map rotation, transparency control, supports vector 3D raster.





Entertainment

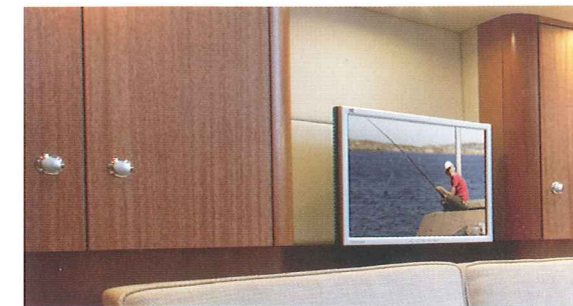
There is a wide selection of alternatives for on-board entertainment. Here are just a few of the options available.



Computers for navigation and entertainment, with integrated wireless Internet connections



DVD player and IPOD or MP3 connections



Flat screen TV in sizes up to 17 inches. Audio system with Dolby® surround sound



Waterproof loudspeakers in the cockpit

Engine, generator and batteries



Volvo Penta D2-55S

Engine

The Najad 405 is powered by the Volvo Penta D2-55S, a compact four-cylinder marine diesel producing 55 hp, with an S-drive and a 3-blade folding propeller. The engine is designed to work at low revs, putting the emphasis on low noise level and minimum vibration. High torque across the entire rev band and low emissions are other important characteristics.

Technical specifications

Crankshaft output	41 kW (55 hp) at 3000 r/min
Max. torque	135 Nm at 2400 r/min
Configuration	In-line 4-cylinder
Generator	115 A
Displacement	2.2 litres
Weight incl. S-drive	253 kg
Emissions	Will meet the environmental standards that are planned for introduction in Europe and the US in 2006
Propeller	S-drive, 3-blade folding propeller



Mastervolt Whisper Generator

Generators and batteries

Generators, battery chargers, inverters and batteries are available in a number of different varieties for different needs.

Generators

The mastervolt Silent Whisper generator 3.5 kW is available for the Najad 405.

Mass Combi

The Mastervolt Mass Combi includes a three-stage charger and an inverter with sinus wave. The inverter can handle a peak power of 200 % and the charger keeps your batteries in shape for a long time.

Mass battery chargers

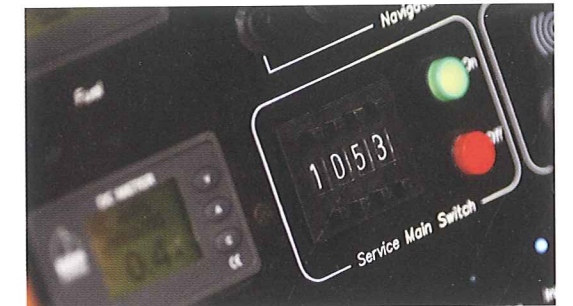
All Mastervolt chargers take care of all types of batteries and keep them fully charged without overcharging.

Mass inverters

Mastervolt Mass inverters deliver pure sinus wave to the onboard equipment.

AGM Batteries

With AGM technology you get deep cycling and high Amp capacity, ideal for feeding the inverter and DC consumers such as the navigation equipment and refrigerator. AGM as stands for Absorbed Glass Mat.



The fuse panel has a code-lock to seal the vessel's main power cutout switch

Electrical system

Domestic system voltage is 12V. Electric power is generated by a 115 A alternator linked to the main engine, or via the shore power connected battery charger that is standard.

Standard AGM batteries with a total domestic capacity of 240 Ah, and a separate AGM start battery with a capacity of 75 Ah. All the fuses in the panel are of the semi-automatic circuit breaker type.

The tank monitors are programmed to the shape of each tank and display readings digitally in either litres/gallons or percent.

The scope of the electrical system varies with the equipment specified on board. The options include a 230 V inverter and a diesel-driven generator producing 3.5 kW.

Standard electrical equipment

- Code locked 12 volt domestic system
- Remote controlled domestic main switch
- AGM Batteries 240 Ah
- Digital water and fuel tank meters showing contents in litres/gallons
- Battery charger
- 230 or 115 volt shore supply system
- Bilge water alarm with logging function

Standard mechanical equipment

- Volvo S-drive 55 h.p.
- Volvo 3-blade folding propeller
- Heating in all cabins
- Holding tank with warning indicator (75% full)
- Electric emergency bilge pump
- Manual and automatic controlled electric bilge pump
- Manually operated bilge pump
- Water heater

Najad 405



The fuse panel has a code-lock to seal the vessel's main power cutout switch

Electrical system

Domestic system voltage is 12V. Electric power is generated by a 115 A alternator linked to the main engine, or via the shore power connected battery charger that is standard.

Standard AGM batteries with a total domestic capacity of 240 Ah, and a separate AGM start battery with a capacity of 75 Ah. All the fuses in the panel are of the semi-automatic circuit breaker type.

The tank monitors are programmed to the shape of each tank and display readings digitally in either litres/gallons or percent.

The scope of the electrical system varies with the equipment specified on board. The options include a 230 V inverter and a diesel-driven generator producing 3.5 kW.

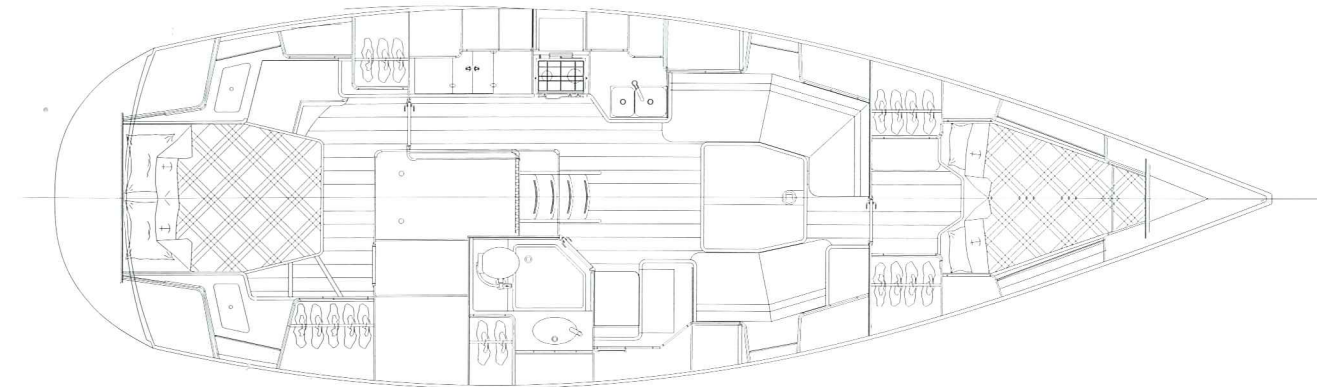
Standard electrical equipment

- Code locked 12 volt domestic system
- Remote controlled domestic main switch
- AGM Batteries 240 Ah
- Digital water and fuel tank meters showing contents in litres/gallons
- Battery charger
- 230 or 115 volt shore supply system
- Bilge water alarm with logging function

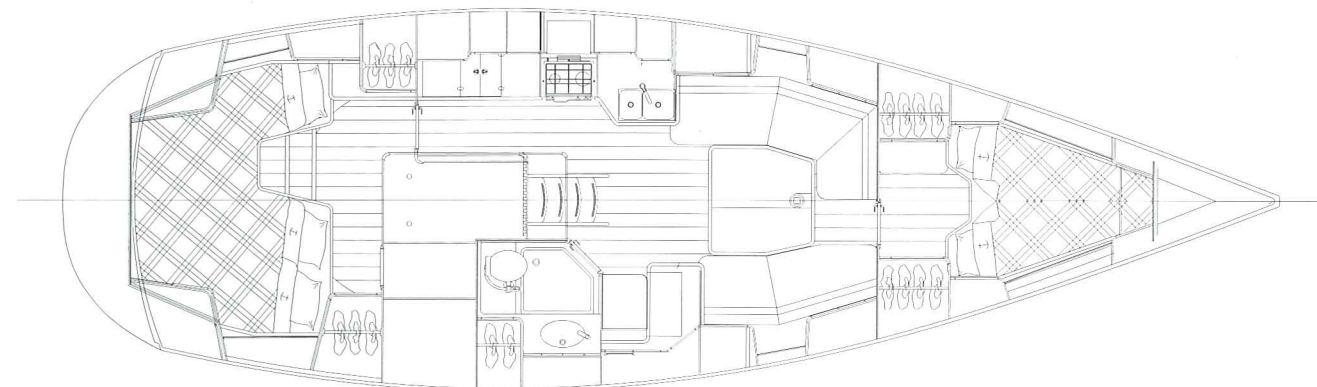
Standard mechanical equipment

- Volvo S-drive 55 h.p.
- Volvo 3-blade folding propeller
- Heating in all cabins
- Holding tank with warning indicator (75% full)
- Electric emergency bilge pump
- Manual and automatic controlled electric bilge pump
- Manually operated bilge pump
- Water heater

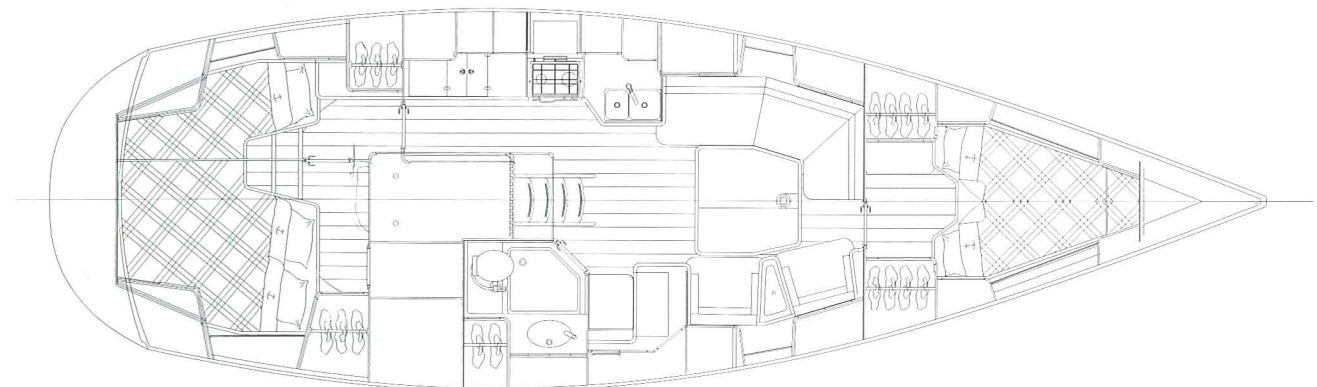
A



B



C



Length overall	12.20 m/40'
Length waterline	10.44 m/34'3"
Beam	3.85 m/12'7"
Draught	2.10 m/6'11"
* Alternative draught	1.90 m/6'3"
Displacement	12.2 t
Mast height above water line	18.50 m/60'8"

Engine Volvo Penta D2-55S
Power 41 kW, 55 h.p.

Water capacity approx.	550 l
Hot water heater	40 l
Fuel capacity approx.	230 l
Holding capacity	60 l

Cruising	85 m ² /915 sq ft
Main	45 m ² /485 sq ft
Working jib	40 m ² /431 sq ft
* Furling Genoa	53 m ² /570 sq ft
* Storm jib	17 m ² /183 sq ft
* Spinnaker	134 m ² /1442 sq ft
* Gennaker	114 m ² /1227 sq ft

* Extra equipment

Najad - Co-operators

VOLVO
PENTA

SELDÉN

LEWMAR

MASTERVOLT
SCANDINAVIA AB

Raymarine

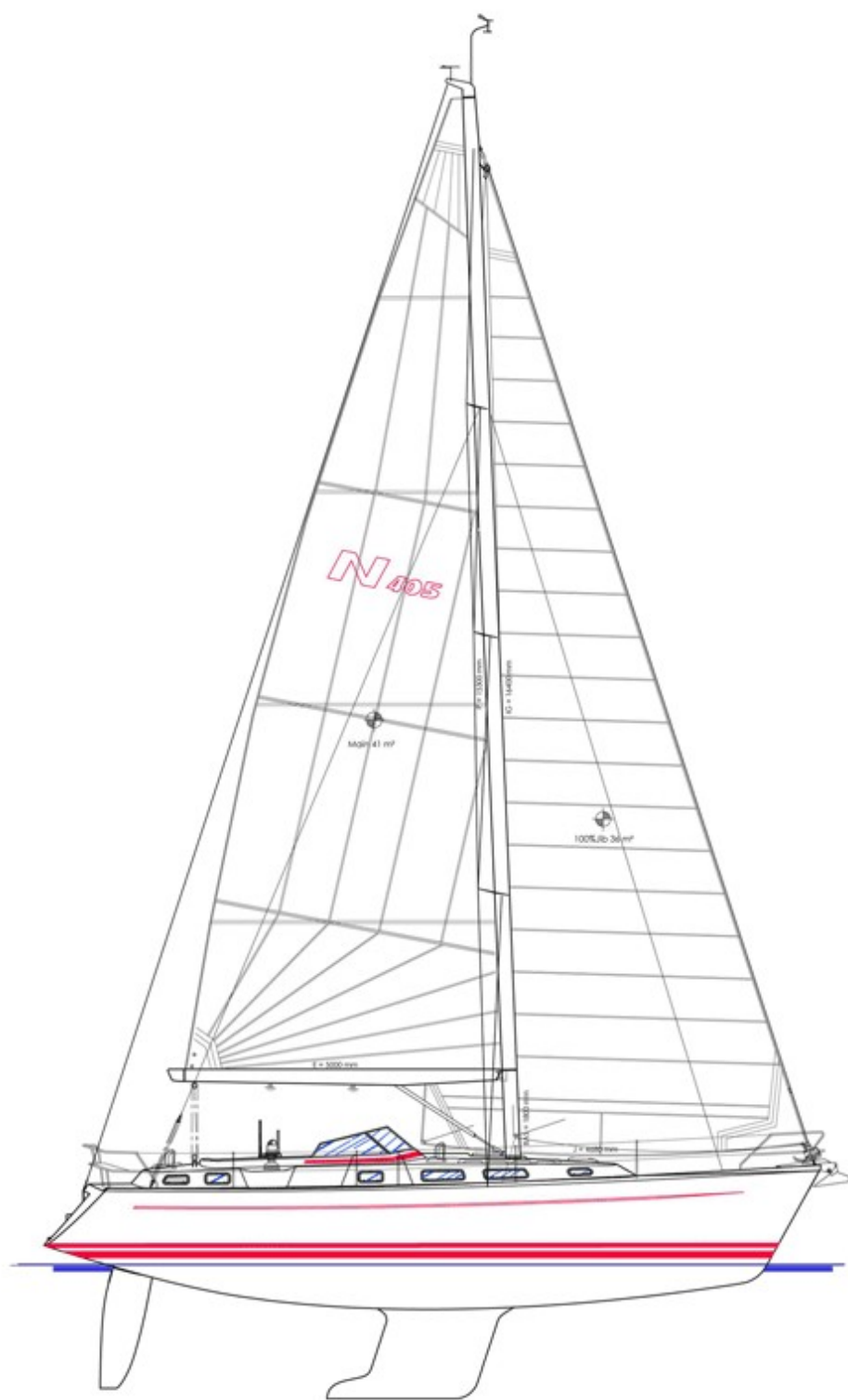
Sail Handling by
ANDERSEN
Stainless Steel Winches

HALSEY
SYVERSEN

NAJAD

Najadvarvet AB, SE-473 31 Henån, Sweden. Phone +46 (0)304 360 00. Fax +46 (0)304 311 79. E-mail: info@najad.se

www.najad.com



NAJAD 405



“A perfect balance of design, performance and quality.”

Discover a new side to Najad. The yacht you're going to read about here is a very special yacht for us. A proud carrier of classic traditions, and at the same time a yacht that exhibits new, exciting and perhaps somewhat unexpected sides.

Above all it's all about superb sailing qualities. Working together with judel/vrolijk & co, we've made the Najad 405 faster, nimbler and easier to manoeuvre than just about anything else in its class. Inside you'll be welcomed by a modern, exclusive interior fashioned in close

cooperation with London-based designer Dick Young. The brief was not to revolutionise, but rather to refine, enhance and refresh. The result is a thoroughly thought-out, timeless combination of form, function and comfort for a fulfilling life on board. In all other respects, the Najad 405 remains very much what you would expect of a Najad. A highly seaworthy, well-built and comfortable 40-foot family cruiser with classically appealing lines. A yacht in which you can sail around the world if you want or a yacht for you to share the very best with those in your world.





“The challenge was to enhance performance without sacrificing traditional Najad values.”

Torsten Conradi, judel/vrolijk & co

The swiftest Najad ever. Building a fast sailing yacht is naturally a major challenge. But combining first-class sailing properties with genuine comfort and generous accommodation is even more challenging.

Like most recent Najad models, the Najad 405 was developed in cooperation with one of the world's most highly renowned sailboat designers: judel/vrolijk & co. Their long experience of racing yachts, including America's Cup winners, has resulted in a very modern hull shape that enables the Najad 405 to be one of the most performance-oriented Najad model to date. The hull is dimensioned with immense precision, featuring a somewhat slimmer entry and sharper stern than

its siblings in the Najad range. The Najad 405 is also equipped with a balanced spade-rudder, with no skeg. It gives you a particularly distinct and light rudder feel that makes the vessel easy to steer, tack and manoeuvre. An all-new, narrower but deeper keel, with a short fore and aft chord length with a delta-shaped bulb and a low centre of gravity enables great lift, quick tacking and extremely good stability. Rigged with a deck stepped mast and three spreaders are further examples of how we combine performance with safe, comfortable sailing. Although the Najad 405 has plenty of space on board for all the family, it has also been designed so you can sail it short-handedly.

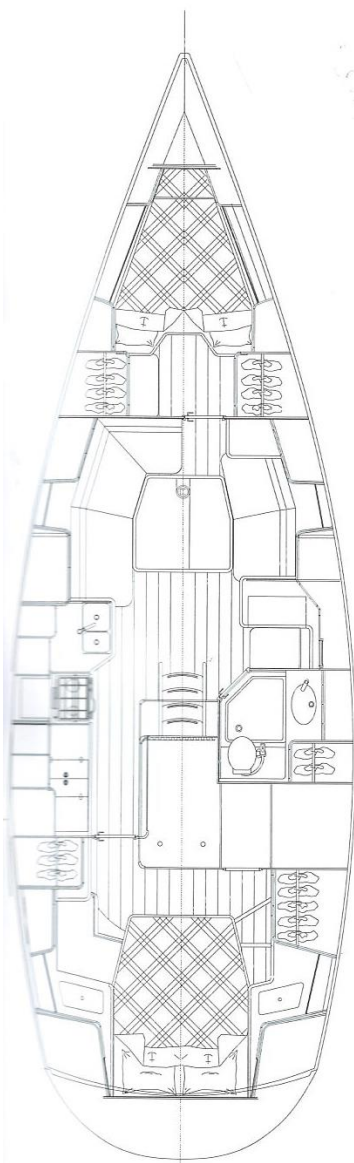
“Through the careful use of sight lines, symmetry and furniture detailing we have aimed to create a feeling of space, calm and elegance.”

Dick Young, Dick Young designs

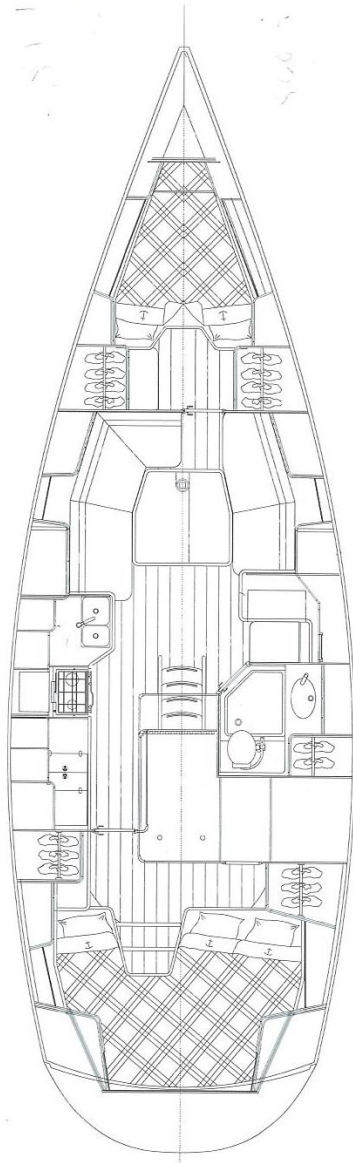




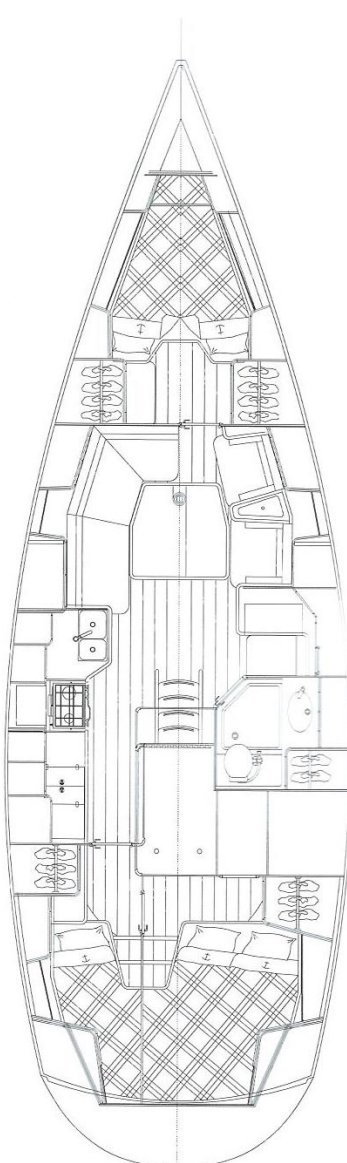




A



B



C

Length overall
Length waterline
Beam
Draught
* Alternative draught
Displacement
Mast height above water line

12.20 m/40'
10.44 m/34'3"
3.85 m/12'7"
2.10 m/6'11"
1.90 m/6'3"
12.2 t
18.50 m/60'8"

Engine Volvo Penta D2-55S
Power 41 kW, 55 h.p.
Water capacity approx.
Hot water heater
Fuel capacity approx.
Holding capacity

550 l
40 l
230 l
60 l

Cruising
Main
Working jib
* Furling Genoa
* Storm jib
* Spinnaker
* Gennaker

85 m²/915 sq ft
45 m²/485 sq ft
40 m²/431 sq ft
53 m²/570 sq ft
17 m²/183 sq ft
134 m²/1442 sq ft
114 m²/1227 sq ft

Exterior

* Options



White hull with blue decorative line*



Built-in davits*



Stainless steel protection*



Underdeck windlass



Shower on swimming platform*



Sprayhood extension*



Opening in lifelines*

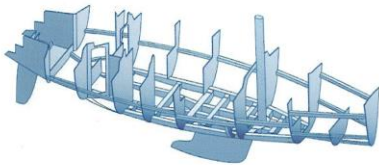


Teak on coach roof*



High-gloss varnished entry*

Hull

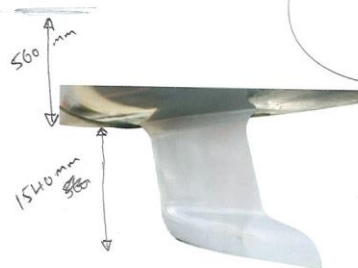


The strong, well-dimensioned hull is designed to offer first-class sailing properties without encroaching on interior space, comfort or safety.

The hull is built from the outside inwards in three main layers in a sandwich construction. First we lay an outer layer of glass fibre, then a thicker intermediate layer of Divinycell (with vacuum) and finally another layer of glass fibre. Divinycell is a resilient, high-density PVC foam with sealed cells that do not absorb water. Density (hardness) is increased and the material is reinforced at points in the hull where equipment is to be fitted.

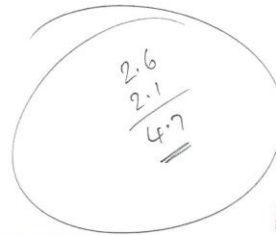
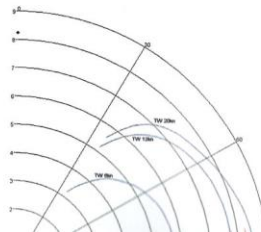
Longitudinal and transverse torsional strength

The next stage is to laminate the hull halves together into a complete unit and lift this out of the mould. The joining and lamination of the hull are done so that the central part



The keel has a short body and sports a narrower shape and a delta-formed heavy ballast bulb for a deep centre of gravity and excellent stability. Standard depth is 2.1 metres. Option: 1.9 metres.

supports which are bolted through the toerail joint. All bulkheads are laminated from both sides. Finally the inside of the boat is given a topcoat and the hull is now ready for the interior fitout and systems.



Balanced spade-rudder, designed for comfortable cruising and easy manoeuvring.

Certified by Germanischer Lloyd

Each new Najad model is designed and built according to G. Lloyd "GL 100 A5" regulations. These cover the hull, deck and superstructure, main bulkheads, engine bed, chain-plate fastenings, stem fittings, engine installation, plumbing installation and electrical and electronics installations. Najad yachts are classified according to the CE norm "Boat Category A-Ocean". You can also specify a type certificate for your particular yacht.

Germanischer Lloyd is an independent international organisation for safety and quality control. The organisation offers technical expertise to industry the world over. G. Lloyd's activities comprise control and certification of safety and quality in ships, boatyards, offshore rigs and other industrial plant.

Engine, generator and batteries



Volvo Penta D2-55S

Engine

The Najad 405 is powered by the Volvo Penta D2-55S, a compact four-cylinder marine diesel producing 55 hp, with an S-drive and a 3-blade folding propeller. The engine is designed to work at low revs, putting the emphasis on low noise level and minimum vibration. High torque across the entire rev band and low emissions are other important characteristics.

Technical specifications

Crankshaft output	41 kW (55 hp) at 3000 r/min
Max. torque	135 Nm at 2400 r/min
Configuration	In-line 4-cylinder
Generator	115 A
Displacement	2.2 litres
Weight incl. S-drive	253 kg
Emissions	Will meet the environmental standards that are planned for introduction in Europe and the US in 2006
Propeller	S-drive, 3-blade folding propeller



Mastervolt Whisper Generator

Generators and batteries

Generators, battery chargers, inverters and batteries are available in a number of different varieties for different needs.

Generators

The mastervolt Silent Whisper generator 3.5 kW is available for the Najad 405.

Mass Combi

The Mastervolt Mass Combi includes a three-stage charger and an inverter with sinus wave. The inverter can handle a peak power of 200 % and the charger keeps your batteries in shape for a long time.

Mass battery chargers

All Mastervolt chargers take care of all types of batteries and keep them fully charged without overcharging.

Mass inverters

Mastervolt Mass inverters deliver pure sinus wave to the onboard equipment.

AGM Batteries

With AGM technology you get deep cycling and high Amp capacity, ideal for feeding the inverter and DC consumers such as the navigation equipment and refrigerator. AGM as stands for Absorbed Glass Mat.



The fuse panel has a code-lock to seal the vessel's main power cutout switch

Electrical system

Domestic system voltage is 12V. Electric power is generated by a 115 A alternator linked to the main engine, or via the shore power connected battery charger that is standard.

Standard AGM batteries with a total domestic capacity of 240 Ah, and a separate AGM start battery with a capacity of 75 Ah. All the fuses in the panel are of the semi-automatic circuit breaker type.

The tank monitors are programmed to the shape of each tank and display readings digitally in either litres/gallons or percent.

The scope of the electrical system varies with the equipment specified on board. The options include a 230 V inverter and a diesel-driven generator producing 3.5 kW.

Standard electrical equipment

- Code locked 12 volt domestic system
- Remote controlled domestic main switch
- AGM Batteries 240 Ah
- Digital water and fuel tank meters showing contents in litres/gallons
- Battery charger
- 230 or 115 volt shore supply system
- Bilge water alarm with logging function

Standard mechanical equipment

- Volvo S-drive 55 h.p.
- Volvo 3-blade folding propeller
- Heating in all cabins
- Holding tank with warning indicator (75% full)
- Electric emergency bilge pump